

# LOCAL FRESH CALENDAR



	JAN.	FEB.	MAR.	APR.	MAY	JUNE	JULY	AUG.	SEPT.	OCT.	NOV.	DEC.
Apples												
Apricots												
Asparagus												
Beets												
Berries												
Carrots												
Cherries												
Corn												
Cucumbers												
Flowers/Plants												
Fresh Herbs												
Garden Beans												
Grapes												
Greens												
Melons												
Nectarines												
Onions												
Peaches												
Pears												
Peas												
Peppers												
Plums												
Potatoes												
Pumpkins												
Radishes												
Rhubarb												
Summer Squash												
Tomatoes												
Winter Squash												

## IDAHO FRESH FRUIT AND VEGETABLE AVAILABILITY\*

In addition to fresh produce, markets also offer a variety of plants, flowers, meat, eggs, dairy, baked goods, preserves, ready to eat foods and crafts.



FIND WHAT'S FRESH



\*Timing and availability of crops may vary year to year and by region depending on weather conditions.

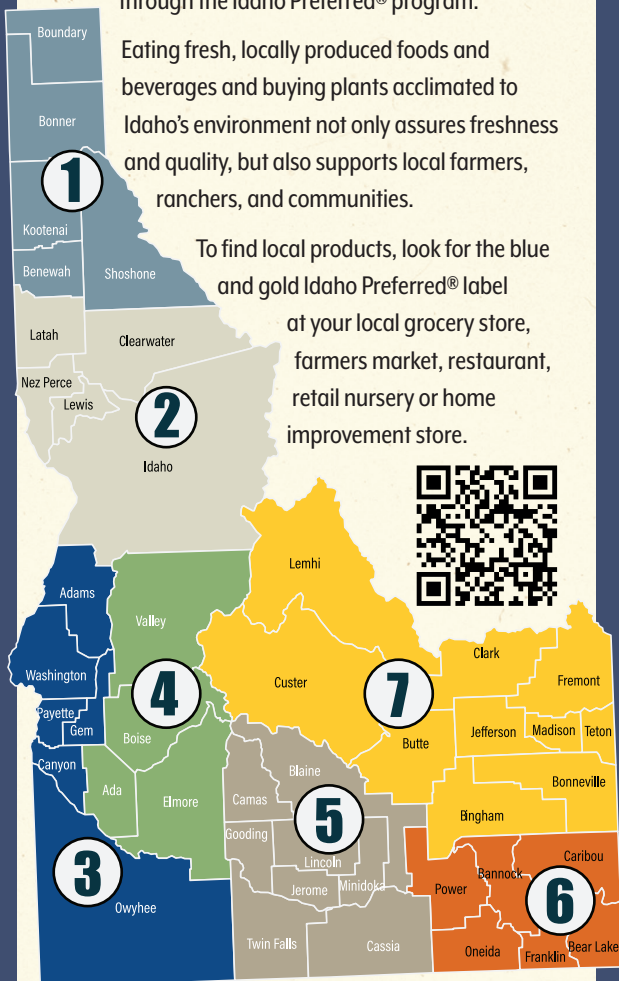


Idaho Preferred® is a program of the Idaho State Department of Agriculture dedicated to identifying and promoting Idaho food and agriculture products.

Fresh fruits, vegetables, and meats; fine wines, beers, and spirits; specialty foods, forest products, and nursery plants and trees – are all products marketed through the Idaho Preferred® program.

Eating fresh, locally produced foods and beverages and buying plants acclimated to Idaho's environment not only assures freshness and quality, but also supports local farmers, ranchers, and communities.

To find local products, look for the blue and gold Idaho Preferred® label at your local grocery store, farmers market, restaurant, retail nursery or home improvement store.



AUGUST 6TH-12TH 2023

Look forward to special events and promotions!



Get more fruits and vegetables when you spend your SNAP Quest Card dollars at participating farmers markets. It's easy with **Double Up Food Bucks!**

For example, if you pay \$10 from your Quest Card at a participating farmers market, we give you up to an additional \$10 to buy fresh fruits and veggies grown in Idaho (see farmers market info for exact match value).

Learn more by visiting [idahofma.org/doubleup](http://idahofma.org/doubleup)

This is a program of the Idaho Farmers Market Association. IFMA is a 501(c)3 non-profit and a statewide, member-based association created to bring together resources and expertise from around the state to help farmers markets in Idaho thrive. Support or join us today!



Idaho Farmers Market Association  
SNAP - Food Stamps  
Double Up Food Bucks®

Idaho Department of Agriculture  
PO Box 7249 Boise, ID 83707  
P: 208.332.8530 • F: 208.334.2879  
[agri.idaho.gov](http://agri.idaho.gov) • [idahopreferred.com](http://idahopreferred.com)

Idaho Farmers Market Association  
PO Box 44222 Boise, ID 83711  
[info@idahofma.org](mailto:info@idahofma.org)  
[idahofma.org](http://idahofma.org)

## IDAHO FARMERS MARKET DIRECTORY 2023







## REGION ONE

### ATHOL FARMERS MARKET

**Athol** - 3rd St & McIntosh  
Fridays 2 pm - 6 pm  
May - September  
www.atholfarmersmarket.com

### BONNERS FERRY FARMERS MARKET

**Bonnerr's Ferry** - 6181 Kootenai St  
Saturdays 8 am - 1 pm  
April - October  
bonnersferryfarmersmarket.org

### FARMERS MARKET AT SANDPOINT

**Sandpoint** - Farmin Park at 4th and Oak  
Saturdays 9 am - 1 pm  
Wednesdays 3 pm - 5:30 pm  
April 29 - October 14  
sandpointfarmersmarket.com



### KOOTENAI COUNTY FARMERS MARKETS

**Hayden** - Corner of Prairie Ave and Hwy 95  
Saturdays 9 am - 1:30 pm  
May - October  
**Coeur d'Alene** - 2151 N Main St  
Wednesdays 4 pm – 7 pm  
May - September  
kootenaifarmersmarkets.org



### ONE SKY ONE EARTH FARMERS MARKET

**Plummer** - Highway 95 on Corner of B St  
Thursdays 3 pm - 6 pm  
June 1 – September 28  
fb.me/OneSkyOneEarthFoodCoalition



### RATHDRUM CRAFT & FARMERS MARKET

**Rathdrum** - 16114 N Meyer Road  
Saturdays 9 am - 2 pm  
April 29 - September 30  
rathdrumcraftandfarmersmarket.blogspot.com

## REGION TWO

### CROUCH FARMERS MARKET

**Crouch** - The Merc Parking Lot  
Saturdays 9 am - 12 pm  
June - October

### GRANGEVILLE FARMERS MARKET

**Grangeville** - Pioneer Park Main St  
Saturdays 9 am-1 pm  
June - October  
www.grangevillefm.com

### KOOSKIA FARMERS MARKET

**Kooskia** - City Park  
Thursday 10 am -2 pm  
June - September  
kooskiafarmersmark.wixsite.com



### LATAH FARMERS MARKET

**Troy** - Troy City Park  
Saturdays 9 am - 1 pm  
June 3- October 7  
**Potlatch** - WI&M Depot  
Wednesdays 4 pm - 7 pm  
June 21 - September 27  
latahfarmersmarket.com

### MOSCOW FARMERS MARKET

**Moscow** - Main Street & Friendship Square  
Saturdays 8 am - 1 pm  
May - October  
www.ci.moscow.id.us/197/Farmers-Market



### TUESDAY MARKET

**Moscow** - 1021 Harold St  
Tuesdays 4 pm - 7 pm  
June - October  
fb.me/tuesdaycommunitymarket



### OROFINO FARMERS MARKET

**Orofino** - City Park  
Tuesdays 11 am - 3 pm  
June - September  
orofinofarmersmarket.com

## REGION THREE

### EMMETT FARMERS MARKET

**Emmett** - 4504 W. Park St in Blaser Park  
Wednesdays 3 pm - 6 pm  
Saturdays 9 am- 1 pm  
June 3 - October 14  
emmettfarmersmarket.com



### FARM TO FORK FARMERS MARKET

**Caldwell** - Indian Creek Plaza  
Tuesdays 5 pm - 8 pm  
May 16 - September 26  
indiancreekplaza.com/farm-to-fork-farmers-market



### FRUITLAND FARMERS MARKET

**Fruitland** - 816 N Whitley Drive (parking lot)  
Every Other Wednesdays 5 pm - 7 pm  
May 10 - August 30  
On Facebook

### MELBA VALLEY FARMERS MARKET

**Melba** - 115 Baseline Rd - on the grass  
Thursdays 5 pm - 8 pm  
April - September  
On Facebook



### MIDDLETON MARKET

**Middleton** - Place Park 75 - Marjorie Ave  
3rd Saturdays 10 am - 2 pm  
June - August  
www.middletonidahochamber.org



### NAMPA FARMERS MARKET

**Nampa** - Lloyd Square Park - 13th Ave S & Front St  
Saturdays 9 am to 1 pm (11 am - 3 pm in November)  
April - November  
nampafarmersmarket.com



### RED TOP MARKET

**Wilder** - 26192 Red Top Rd  
Thursdays - Saturdays 10 am - 6 pm  
July - September  
www.redtopmkt.com



### SNAKE RIVER COUNTRY MARKET

**Marsing** - 101 4th Ave West  
Saturdays 11 am - 3 pm  
May 6 – October 28  
www.snakerivercountrymarket.info

### THE GOAT YARD

**Homedale** - 3878 Pioneer Rd  
Wednesdays 7:30 pm - 11 pm  
May – October  
thegoatyard208.com/

### TOP HAT MARKET

**Homedale** - Bette Uda Park - 200 E Idaho St  
Fridays 3pm - 7 pm  
June - August

### WEISER FARMERS MARKET

**Weiser** - Train Depot - I State St  
Thursdays 5 pm - 7 pm  
June 1 - October 5  
On Facebook



## REGION FOUR

### BOISE FARMERS MARKET

**Boise** - 1500 Shoreline Drive  
Saturdays 9 am - 1 pm  
April - December  
theboisefarmersmarket.com



### BOISE FARMERS MOBILE MARKET

see [website for schedule and locations](#)  
June - September  
theboisefarmersmarket.com/mobile-market



### CAPITAL CITY PUBLIC MARKET

**Boise** - 827 W Main St - Grove Plaza  
Saturdays 9:30 am - 1:30 pm  
April 15 - December 16  
capitalcitypublicmarket.com



### DONNELLY FARMERS MARKET

**Donnelly** - City Park - FW Gestrin & E Roseberry Rd  
Wednesdays 3 pm - 6 pm  
June 15 - September 28  
fb.me/DonnellyFarmersMarket/



### EAGLE SATURDAY MARKET

**Eagle** - Heritage Park - 185 E State St  
Saturdays 9 am - 2 pm  
May 6 - October 7  
cityofeagle.org/170/Eagle-Saturday-Market



### MCCALL FARMERS MARKET

**McCall** - 141 Moonridge Drive  
Wednesdays & Saturdays 11 am - 1 pm  
June 9 - October  
visitmccall.org/directory/listing/mccall-farmers-market

### MERIDIAN MAIN STREET MARKET

**Meridian** - 33 E. Broadway Ave - City Hall  
Saturdays 9 am - 1 pm  
April 15 - October 14  
meridianmainstreetmarket.com



### MOHO MARKET

**Mountain Home** - The Hub Plaza - 190 E 2nd S  
1st Saturday each month 9 am -1 pm  
May - September  
fb.me/mohomarket1



### MOUNTAIN HOME FARMERS MARKET

**Mountain Home** - Railroad Park  
Saturday 8 am - 1 pm  
May - October  
On Facebook

## REGION FIVE

### BURLEY FARMERS MARKET

**Burley** - Cassia Fair Grounds - 1101 Elba Ave  
Select Thursdays 4 pm - 8 pm  
June - September  
fb.mt/burleymarket/



### GOODING FARMERS MARKET

**Gooding** - Corner of 13th and Main  
Tuesdays 2 pm - 6 pm  
May 23 - October 17  
goodingfarmersmarket.com



### HAGERMAN VALLEY FOUNDATION

**Hagerman** - In the Orchard - 1071 E 2900 S  
Sundays 10 am - 2 pm  
June 18 - September 3  
hagermanvalleyfoundation.org

### JEROME FARMERS MARKET

**Jerome** - 392 East 300 South / Hwy 93  
Saturdays 9 am - 1 pm  
June 3 - October 14  
jeromefarmersmarket.com

### LINCOLN COUNTRY CROSSROADS FARMERS MARKET

**Shoshone** - Courthouse Lawn - III West B St  
Fridays 4 pm - 7 pm  
June - mid August  
lccfarmersmarket.com



### MARKET ON MAIN

**Twin Falls** - 156 Main Ave N  
Saturdays 9 am - 2 pm  
June - August  
tfmarketonmain.com



### TWIN FALLS FARMERS MARKET LLC

**Twin Falls** - Magic Valley Mall - 1485 Pole Line Rd N  
Saturdays 9 am - 1 pm  
May - October  
On Facebook



### VALLEY VENUES FARMERS MARKET

**Eden** - 917 Valley Rd  
Tuesdays & Thursdays 4 pm - 6 pm  
June- November

### WEDNESDAY FARMERS MARKET

**Buhl** - 1010 Main St  
Wednesdays 4 pm - 6 pm  
July 12 - September 27  
fb.me/buhlseiors1979.org

### WOOD RIVER FARMERS MARKETS

**Hailey** - Roberta McKercher Park  
Saturdays 9 am - 1 pm  
**Ketchum** - Forest Service Park  
Wednesdays 12 pm - 4 pm  
June - October  
wrfarmersmarket.org



## REGION SIX

### BLACKFOOT FARMERS MARKET

**Blackfoot** - 1800 E Airport Rd / Corner of Airport & Hwy 91  
Saturdays 8 am - 12 pm  
July 12 - September 27  
On Facebook

### PORTNEUF VALLEY FARMERS MARKET

**Pocatello** - 435 W Center St  
Saturdays 9 am - 1 pm / Wednesdays 4 pm - 8 pm  
May - October  
pvfm.info



## REGION SEVEN

### CHALLIS COMMUNITY FARMERS MARKET

**Challis** - Challis City Park  
Saturdays 10 am - 1 pm  
June - October  
challischamber.com/farmers-market

### IDAHO FALLS FARMERS MARKET

**Idaho Falls** - 600 Memorial Drive  
Saturdays 9 am - 1 pm  
May 6 - October 28  
idahofallsfarmersmarket.org



### LEMHI COUNTY FARMERS MARKET

**Salmon** - Veteran's Memorial Park- 100 Water St  
Saturdays 9 am - 1 pm  
June - September  
lemhifarmersmarket.com



### REXBURG FARMERS MARKET

**Rexburg** - Madison Fairgrounds - 452 W 2nd N  
Fridays 4 pm - 8 pm  
May 5 - October 6  
rexburgfarmersmarket.org



### TETON VALLEY FARMERS MARKET

**Driggs** - Driggs City Center Plaza - 60 S. Main St  
Fridays 9 am - 1 pm  
June 2 - September 29  
tetonvalleyfarmersmarket.org



### UPWINDERS FARMERS & ARTISANS MARKET

**Arco** - 310 S. Idaho St  
Thursdays 5 pm - 7 pm  
July - September  
On Facebook

